



**Meat Stick  
Sharp Spur  
Ranch Hand  
Homestead  
The Callahan**

**INSTRUCTIONS MANUAL**

**READ THE INSTRUCTIONS AND WARNINGS IN THIS MANUAL CAREFULLY BEFORE USING THIS FIREARM**

**FIREARMS SAFETY**

We believe that safe firearms handling is the most important consideration for anyone who uses firearms and ammunition. Please take a few minutes to thoroughly read and understand this instruction manual included with this shotgun.

**CAUTION**

**FIREARMS SAFETY DEPENDS ON YOU!**

- Don't rely on your gun's safety. Treat every gun as if were loaded and ready to fire.
- Never cross a fence, climb a tree or jump a ditch with a loaded gun.
- Never load or carry a loaded gun until you intend to use it.
- Watch your muzzle so the other fellow doesn't have to.
- Keep guns and ammunition separately and in locked storage.
- Don't shoot unless absolutely sure of your target and what is beyond it.
- Know the range of your gun.
- Always wear eye and ear protection when shooting.
- Always be sure the barrel is free of obstructions, and only carry ammunition specifically intended for the gun you are using.
- Do not alter or modify your gun. Have your gun regularly checked by a gunsmith.

**THIS MANUAL CONTAINS**

**SAFE GUN HANDLING IS YOUR PERSONAL RESPONSIBILITY AT ALL TIMES. Disregarding warnings in this manual may result in injury or death to you and others and damage to property.**

1. Important warnings that should be read and understood before using this firearm.
2. Directions and procedures for handling, loading, firing and unloading.
3. Instructions for care, cleaning, repair, and service of this shotgun.

This instruction and safety manual is designed to help you in learning how to properly use and care for your shotgun. Only when you are certain you have fully familiarized yourself with the function of your firearm should you practice loading, unloading and firing with live rounds of ammunition.

**This instruction manual should always accompany this firearm and be transferred with it upon change of ownership. Should you ever need to replace it, this manual is available FREE upon request.**

**DISCLAIMER OF LIABILITY**

We shall not be responsible for product malfunctioning or for physical injury, death or damage to property resulting from either intentional or accidental discharge of this firearm, its criminal or negligent use, improper or careless handling, unauthorized modifications or alteration, use of defective or improper or hand-loaded or (replaced) ammunition, or from its use for purposes or subjection to treatment for which it was not designed. For your safety, use only original high quality commercially manufactured ammunition in good condition that is appropriate to the caliber / gauge of your gun. We shall not be responsible for products or results from use of defective, improper or reloaded ammunition.

**WARNING - LEAD EXPOSURE**

Discharging firearms in poorly ventilated areas, cleaning firearms, or handling ammunition may result in exposure to lead and other substances that may cause birth defects, reproductive harms, and other serious physical injuries. Have adequate ventilation at all times. Wash your hands thoroughly after exposure. Shooting or cleaning guns may expose you to lead.

**WARNING**

Prior to removing this gun from its packaging and prior to loading and firing, carefully and thoroughly read the entire instruction manual which gives advice on the gun's proper handling and functioning. Your safety and that of others (including your family) depends on your responsible compliance with that advice. If unfamiliar with firearms, seek supervised instruction.

**FIREARMS SAFETY IS YOUR RESPONSIBILITY.**

## GENERAL SAFETY WARNINGS

1. Careless and improper handling of this gun could result in unintended discharge causing injury, death or property damage. Safety must be the first and constant consideration when handling a firearm and ammunition.
2. This shotgun was designed to function properly in its original condition. Alterations can make it unsafe. Do not alter any part or add or replace parts.
3. Shotguns should only be carried with the action open and chamber empty to prevent accidental discharge.
4. Always handle and treat your gun as if it were loaded so you never fire it accidentally when you think it is unloaded. Never take anyone's word it is unloaded. Always check it yourself with your fingers off the trigger and the gun pointed in a safe direction.
5. Never place your finger inside the trigger guard unless you intend to fire.
6. Water, snow, mud, excessive lubricating oil or grease or any other material can obstruct the barrel of your gun. Always check the barrels of your firearm for obstruction before loading and firing. Clean a fouled gun immediately to ensure its correct and safe function.
7. Keep the gun's muzzle pointed in a safe direction at all times. Never let the muzzle of a firearm point at any part of your body, another person or at anything you do not intend to shoot. Always be certain of your target before firing.
8. UNLOAD ALL FIREARMS WHEN NOT IN USE. NEVER STORE A LOADED FIREARM. Firearms and ammunition should be safely stored separately so that they are inaccessible to children or unauthorized users.
9. Always make sure your gun is not loaded before cleaning, storing, or handing it to another person.

10. Always wear safety glasses while shooting to protect your eyes from injury by gun powder, gas, lubricant, dirt or metallic particles, carbon residue, sparks or other debris.

11. Always wear ear protection when shooting, especially on a range. Without ear protection the noise from your gun and other guns close to you, could leave a "ringing" in the ears for some time after firing. Repeated exposure to shooting noise could result in permanent hearing loss.

12. Never climb a tree, fence or wall while carrying a loaded firearm.

13. Don't shoot at a hard surface or water. A ricochet may travel in unpredictable directions to strike you or an object you cannot see.

14. Firearms and alcohol do not mix. Never drink alcoholic beverages or take drugs before or during shooting, as this constitutes criminal disregard for your safety and that of others. Never use a gun while you are taking medication unless you have checked with your doctor to ensure your fitness to handle your gun safely.

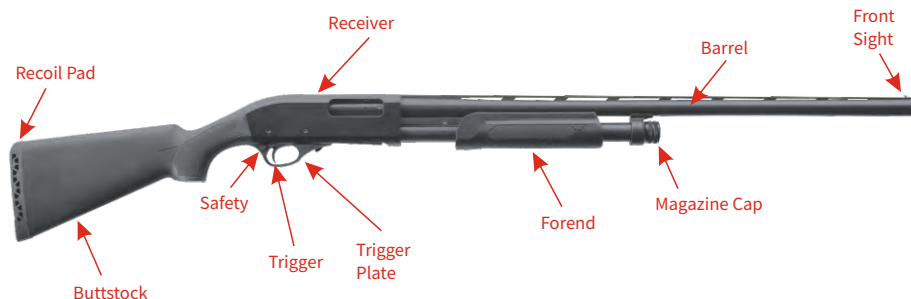
15. If you have any doubts about your ability to handle or use this shotgun safely, seek supervised instruction.

16. Horseplay has no place around firearms. Guns can't think - you can!

17. Remember, safety is your responsibility. Be a safe shooter.

18. FOLLOW THE LAW: Obey all local, state and federal laws regarding storage, shooting and transporting your firearm.

## NOMENCLATURE



## UNPACKING YOUR SHOTGUN

When you remove the shotgun from its box, you will see the 2 major components, the barrel and the shotgun (Fig.1). Your shotgun comes with a choke tube installed in the barrel along with a choke tube wrench if it is equipped with mobile chokes. A magazine capacity plug should be installed into the magazine or separately located. You should also have an instruction manual in the package.



Fig.1

## ASSEMBLY

1. Unscrew the magazine cap from the front of the forend in a counter clockwise direction as shown in (Fig.2).

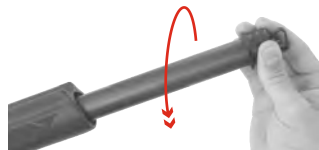


Fig.2

2. Move the forend reward slightly, so that the bolt is in the locked closed position (Fig.3).

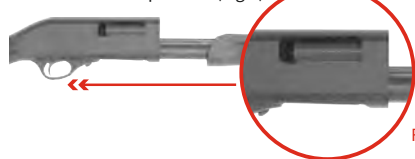


Fig.3

Install the bolt on the action bar as shown on (Fig.3a and 3b). Be sure the action bar plunger pin stays inside bolt.

**WARNING: IT WILL CAUSE JAMMING IF THE BOLT STAYS ON THE ACTION BAR PLUNGER PIN**



Fig.3a



Fig.3b

3. Insert the barrel extension into the receiver, making sure that the barrel extension is sliding between the bolt and top of the receiver and that the barrel collar is surrounding the magazine tube. Push the barrel back into the receiver until the barrel extension is flush with the front of the receiver (Fig.4-5).

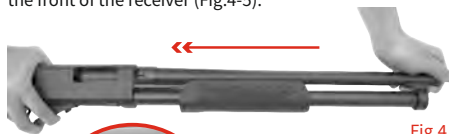


Fig.4



Fig.5

4. Reattach the magazine cap, screwing it down as tightly as possible (Fig.6).

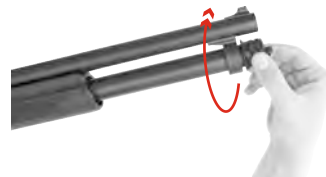


Fig.6

The shotgun is now fully assembled.

5. Press release button to unlock the bolt (Fig.7).



Fig.7

6. Move forend fully backward and forward (pumping) (Fig.8).

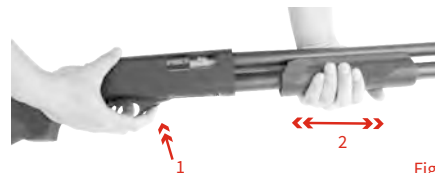


Fig.8

Repeat the steps 5 and 6 a few times to check the assembly is done properly.

## CAUTION

Do not load your shotgun until you are ready to use it and unload it immediately after you have finished shooting. Always carry your shotgun with the safety engaged. The user of this shotgun, and all firearms, should never depend on the manual safety, or any other mechanical device, to make a firearm completely safe. It is your responsibility to always keep the muzzle of your firearm pointed in a safe direction.

## OPERATING INSTRUCTIONS

**WARNING:** READ AND UNDERSTAND ALL INSTRUCTIONS AND WARNINGS IN THIS MANUAL BEFORE USING THIS SHOTGUN. IT IS IMPORTANT TO LEARN THE PARTS OF YOUR SHOTGUN AND THEIR FUNCTIONS BEFORE USING THIS FIREARM.

## MANUAL SAFETY

Your shotgun is equipped with a manual trigger block safety button located in the trigger guard, just behind the trigger (Fig.9). When the button is pushed from the left side of the receiver, protruding to the right side, the trigger is blocked and the safety is on.



Fig.9

When the button is pushed from the right side of the receiver, protruding to the left side, you will see a red circle on the safety button indicating the safety is off and the shotgun is in an unsafe condition, ready to fire if the trigger is pulled, as shown in (Fig.10). The directions are opposite for left hand shotguns.



Fig.10

## CAUTION

The manual safety of your shotgun should always be on except for when you are ready to pull the trigger and fire the shotgun. This will help insure that no accidental discharges take place. You should only have the safety off, and be able to see the red line on the left side of the receiver, when you are ready to shoot. (The directions are opposite for left hand shotguns.)

## MULTI CHOKE TUBES

All pump action shotguns, except slug models, equipped with interchangeable multi choke tube. The markings and the notches on the tube can identify the choke tube (Fig.11).



Fig.11

## Multi-Choke Tube Markings and Constrictions

Name	Marking	Notches	Constriction (inches)			
			12ga	20ga	28ga	.410
Cylinder	C		.000"	.000"	.000"	.000"
Skeet	SK		.005"	.005"	.005"	.005"
Improved Cylinder	IC		.010"	.009"	.009"	.008"
Light Modified	LM		.015"	.012"	.012"	.010"
Modified	M		.020"	.015"	.015"	.012"
Improved Modified	IM		.025"	.018"	.018"	.014"
Full	F	I	.035"	.024"	.024"	.018"
Extra Full	XF		.040"	.027"	.027"	.020"
Turkey Choke	XXF		.045"	.032"	.032"	.025"

**WARNING:** PERIODICALLY CHECK TO BE SURE THE CHOKE TUBES ARE TIGHT & PROPERLY SEATED.

Before changing a choke tube, always make sure that your shotgun is unloaded and the safety is in the "Safe" position. To change the choke tubes, use the choke tube wrench. The wrench and additional chokes are supplied in the shotgun box. Insert the wrench into the recessed space of the tube and unscrew counterclockwise. Insert the desired choke tube and seat with the wrench in the clockwise direction (Fig.12).



Fig.12

**WARNING:** NEVER FIRE YOUR SHOTGUN WITHOUT A CHOKE TUBE INSTALLED. This could damage the choke tube threads on the inside of the barrels.

## AMMUNITION

Use only high quality factory ammunition specifically designed for your gauge of shotgun. The gauge and chamber are marked on barrel. The shells that can be used for each gauge are listed at below table. We do not recommend using slugs with choke tubes tighter than improved cylinder.

### WARNING: STEEL SHOT USAGE

Your shotgun will accommodate steel shot. However steel shot (up to and including shot size #2) should not be fired through your shotgun with a choke tighter than modified. If shot larger than #2 is used, the tightest choke used should be an improved cylinder. Do not use steel shot with improved modified, full or extra full choke tubes (flush mount or external).

**WARNING: ACCIDENTAL LOADING AND DISCHARGE OF SHELLS OF THE WRONG GAUGE IN YOUR GUN CAN RESULT IN DAMAGE TO YOUR GUN AND INJURY TO THE SHOOTER OR OTHERS.**

Only carry the proper ammunition with you when shooting.

## LOADING

When loading, keep the safety on at all times and keep the muzzle pointed in a safe direction.

Gauge & Chamber		Shells can be used					
12/70	12Ga 2 ¾"	12/70	12Ga 2 ¾"				
12/76	12Ga 3"	12/70	12Ga 2 ¾"	12/76	12Ga 3"		
12/89	12Ga 3 ½"	12/70	12Ga 2 ¾"	12/76	12Ga 3"	12/89	12Ga 3 ½"
20/76	20Ga 3"	20/70	20Ga 2 ¾"	20/76	20Ga 3"		
28/76	28Ga 3"	28/70	28Ga 2 ¾"	28/76	28Ga 3"		
410/76	410cal 3"	410/70	410cal 2 ¾"	410/76	410cal 3"		

Turn the shotgun upside down. Make sure the action is locked closed.

Place a shotshell, of the proper gauge, onto the carrier (Fig.13).



Fig.13

Slide the shell up and into the magazine tube. Two shells can fit into the magazine tube.

Cycle the action by first pulling the forend toward the action and then pushing the forend forward until the action locks closed. Your shotgun is now in battery (Fig.14).



Fig.14

You can increase the shot capacity of your shotgun by adding an additional shotshell into the magazine following the procedures above.

## FIRING

Keep the muzzle pointed at your target. Be aware of what is behind or around your target as well as the target itself. After you have cycled the action and loaded a shell into your pump shotgun, the gun is ready to fire. Depress the safety so that it is flush with the right side of the trigger guard and has been disengaged. Pull the trigger and the shotgun will fire. Cycle the action to eject the spent shell and reload another shell.

## UNLOADING

Before unloading, make sure the safety is in the ON position. And keep the muzzle pointed in a safe direction. Never allow your fingers or another object to come in contact with the trigger during unloading.

If you have your shotgun loaded and are ready to fire, but change your mind, first engage the safety by pushing the safety button flush with the left side of the trigger guard so that the red ring is no longer visible. Push the action release inward to unlock the action and slide the forend toward the action (Fig.15).



Fig.15

Do not use a cartridge that is longer than the maximum cartridge length that is stamped on the barrel.

If you want to unload without pumping; turn your gun and press the carrier, press the latch which is the right side of the receiver. The shell, which had been loaded, will eject (Fig.16). Unload the shells by pressing the latch for every one. Be careful not to allow the shot shell to eject onto a hard surface, which may cause the shell to discharge.

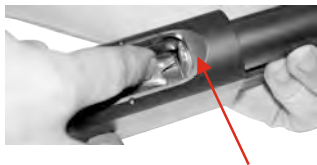


Fig.16

## DISASSEMBLY

Before disassembling your shotgun, be absolutely certain that it is unloaded. As an added precaution, visually check the chamber and the magazine tube for any cartridges. Put the safety in the on position.

1. Remove the magazine cap (Fig.17).

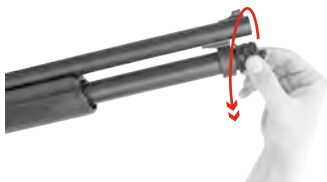


Fig.17

2. Remove the barrel by pulling it out of the action (Fig.18).



Fig.18

3. Remove the forend and action bar assembly (Fig.19).



Fig.19

4. Remove the block from the action bar assembly (Fig.20-21).



Fig.20

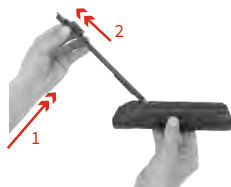


Fig.21

5. The trigger group may be removed from the receiver for further cleaning of the receiver and trigger group. It is recommended that a thorough cleaning be performed every 300 rounds.

To remove the trigger group, first remove the two trigger group retaining pins by using a punch to drive the pins out of the receiver (Fig.22).

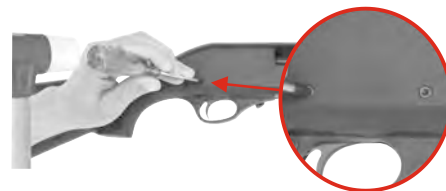


Fig.22

6. Once the retaining pins are removed, the entire trigger group can be removed from the receiver by pulling down on the trigger guard (Fig.23).



Fig.23

No further disassembly of the trigger group is recommended for anyone other than a trained gunsmith.

7. When reinstalling the trigger group, the hammer must be in its cocked position. To cock the hammer, pull down on the hammer with your thumb until it locks into place as shown in (Fig.24).

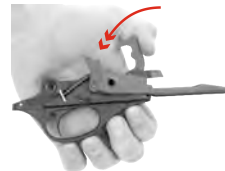


Fig.24

## MAGAZINE CAPACITY PLUG

Your shotgun is supplied with a plug to limit the capacity of cartridges in the magazine tube. Your country's regulations may not require this plug to be used so it may be removed.

When the barrel is removed from the shotgun, hold the magazine spring retainer with one of hand and push it down gently. With the other hand, press in the slot on the magazine tube with a screwdriver and push it upwards (Fig.25).



Fig.25

Be careful at this point, as the retainer holds a spring inside of the magazine tube and the spring is under tension. To replace the retainer plug, align the tab on the plug so that it clicks into place and push.

Your shotgun has now been completely disassembled. No further disassembly of your shotgun is necessary for routine maintenance and cleaning. Our service department or a competent gunsmith should only perform any further disassembly.

An exploded view of the disassembled shotgun is shown in (Fig.26).

Note: Photographs shown in this manual may not be from the exact model that you have but the instructions will apply to the model you have.

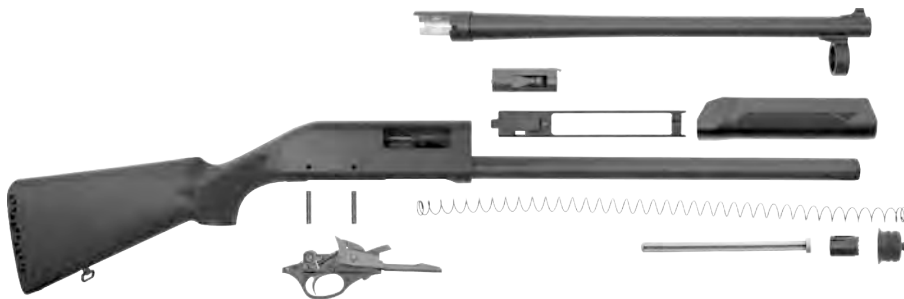


Fig.26

## CLEANING AND STORAGE

Periodically, clean the bore with proper cleaning equipment. Oil all metal surfaces lightly with high quality gun oil. Never pour oil into any inside mechanisms.

If you will be storing your shotgun for long periods of time, apply gun grease to all metal parts, store the shotgun in a dry, and secure area. When you clean the shotgun, make sure the muzzle is not plugged with any heavy grease that would cause a barrel obstruction.

## SERVICE INSTRUCTIONS

If your shotgun does require service, contact our local service department by e-mail, letter, fax or telephone. If you should ever have to send your shotgun back for repair please follow these instructions:

- a) Make absolutely certain it is unloaded;
- b) Do not send ammunition with your shotgun;
- c) Remove any accessories;
- d) Please package the gun securely (be certain gun parts can not shift during shipment) in a suitable shipping container;
- e) Please include, with your firearm, a clear description of the problem and service you wish us to perform;
- f) Please give us a clear ship-to address, (no P.O. Box numbers) your daytime phone number and if possible a fax number and email address;
- g) Please place your correspondence inside the package;



## **AKKAR FIVE YEAR LIMITED WARRANTY**

AKKAR USA firearms are warranted to be free from defects in materials and/or workmanship for one (1) year on wooden parts and surface treatment and five (5) years on other parts. This warranty follows the serial number and its original purchase date by the consumer.

The warranty does not cover repairs related to ordinary wear and tear, alterations by unauthorized persons, corrosion, accidents, misuse, use of incorrect or other than factory ammunition loaded to SAAMI specifications, gun barrels damaged by an obstructed bore, guns damaged in shipment due to improper packing and handling, the normal wear of any parts including finishes of metal, wood, camouflage or chrome, damaged or shopworn display guns, or failure to provide proper maintenance.

Non-AKKAR USA parts are not covered by the warranty. AKKAR USA reserves the unconditional right to inspect any firearm before making any repairs or adjustments under this warranty. AKKAR USA shall not be liable for any incidental, consequential, or contingent damages. AKKAR USA offers no other warranties of any kind or condition, including, but is not limited to any implied warranty of merchantability or fitness for a specific purpose.

THIS LIMITED WARRANTY GIVES YOU SPECIFIC LEGAL RIGHTS, AND YOU MAY ALSO HAVE OTHER RIGHTS WHICH VARY FROM STATE TO STATE.

## **AKKAR USA PERFORMANCE UNDER THE WARRANTY STATEMENT NOTED ABOVE**

1. After notice of defects in material and/or workmanship is received by AKKAR USA, AKKAR USA shall send instructions for shipment of the firearm; and repairs will be made and the firearm returned within a reasonable time after the firearm is received.
2. The cost of shipping, insurance charges, etc. involved in returning the firearm to AKKAR USA should be prepaid by the owner.
3. If AKKAR USA, after receipt of the firearm, determines that any defects in material(s) and/or workmanship were the result of abuse and/or neglect, or otherwise not covered by the warranty set forth above, AKKAR USA shall notify the owner of that effect and give an estimate for repair. In such cases, repair, return shipping and insurance charges, etc. shall be paid by such an owner.
4. Cost of warranted parts and labor performed shall be provided without charge by AKKAR USA.
5. In the event AKKAR USA is unable to make warranted repairs to the firearm, within a reasonable time after its receipt, AKKAR USA will notify the owner giving him / her the option too. A). receive a replacement for the same model, if then available in inventory, or B). receive a refund, either of which, if feasible, will be made through the store of original purchase.

FOR CUSTOMER SERVICE PLEASE CONTACT AKKAR USA AT

[service@akkarusa.com](mailto:service@akkarusa.com)

Akkar USA  
PO Box 7307  
North Kansas City, Missouri 64116

## STATE LAW WARNINGS

### CALIFORNIA

WARNING "Firearms must be handled responsibly and securely stored to prevent access by children and other unauthorized users. California has strict laws pertaining to firearms, and you may be fined or imprisoned if you fail to comply with them. Visit the Web site of the California Attorney General at <https://oag.ca.gov/firearms> for information on firearm laws applicable to you and how you can comply. Prevent child access by always keeping guns locked away and unloaded when not in use. If you keep a loaded firearm where a child obtains and improperly uses it, you may be fined or sent to prison."

### CONNECTICUT

Unlawful storage of a loaded firearm may result in imprisonment or fine.

### FLORIDA

It is unlawful, and punishable by imprisonment and fine, for any adult to store or leave a firearm in any place within the reach or easy access of a minor under 18 years of age or to knowingly sell or otherwise transfer ownership or possession of a firearm to a minor or a person of unsound mind."

### GUAM

It is unlawful and punishable by imprisonment and a fine for any adult to store or leave a firearm without placing it in a secure locked cabinet or closet, or without a trigger lock in place.

### MAINE

Endangering the welfare of a child is a crime. If you leave a firearm and ammunition within easy access of a child, you may be subject to fine, imprisonment or both. Keep firearms and ammunition separate. Keep firearms and ammunition locked up. Use trigger locks .

### MARYLAND

WARNING: Children can operate firearms which may cause death or serious injury. It is a crime to store or leave a loaded firearm in any location where an individual knew or should have known that an unsupervised minor would gain access to the firearm. Store your firearm responsibly!

### MASSACHUSETTS

WARNING FROM THE MASSACHUSETTS ATTORNEY GENERAL: This handgun is not equipped with a device that fully blocks use by unauthorized users. More than 200,000 firearms like this one are stolen from their owners every year in the United States. In addition, there are more than a thousand suicides each year by younger children and teenagers who get access to firearms. Hundreds more die from accidental discharge. It is likely that many more children sustain serious wounds or inflict such wounds accidentally on others. To limit the chance of such misuse, it is imperative that you keep this weapon locked in a secure place and take other steps necessary to limit the possibility of theft or accident. Failure to take reasonable preventive steps may result in innocent lives being lost, and in some circumstances may result in your liability for these deaths."

It is unlawful to store or keep a firearm, rifle, shotgun or machine gun in any place unless that weapon is equipped with a tamper resistant safety device or is stored or kept in a securely locked container.

### MINNESOTA

It is unlawful to store or leave a loaded firearm where a child can obtain access.

### NEW HAMPSHIRE

It is important that the owner of a firearm seek firearm safety instructions from a certified firearms instructor and keep firearms secured from unauthorized use.

### NEW JERSEY

It is a criminal offense, punishable by a fine and imprisonment, for an adult to leave a loaded firearm within easy access of a minor.

### NEW YORK

The use of a locking device or safety lock is only one aspect of responsible firearm storage. For increased safety, firearms should be stored unloaded and locked in a location that is both separate from their ammunition and inaccessible to children and unauthorized persons.

### NORTH CAROLINA

It is unlawful to store or leave a firearm that can be discharged in a manner that a reasonable person should know is accessible to a minor.

### PUERTO RICO

The use of a locking device or safety lock on a firearm is advisable. Every loaded weapon as well as its ammunition must be kept out of the reach of minors or people who are not authorized to use them. It is advisable to keep your weapons apart from the ammunition.

### TEXAS

It is unlawful to store, transport, or abandon an unsecured firearm in a place where children are likely to be and can obtain access to the firearm.

### WISCONSIN

If you leave a loaded firearm within the reach or easy access of a child you may be fined or imprisoned or both if the child improperly discharges, possesses, or exhibits the firearm.

## 12GA - 20 GA PART LIST

### NO PART NAME

1	Recoil Pad Screw
2	Recoil Pad
3	Stock
4	Stock Sling Stud
5	Stock Screw
6	Washer Stopper
7	Stock Screw Washer
8	Receiver
9	Latch
10	Latch Spring
11	Interceptor Latch
12	Interceptor Latch Spring
13	Latch Pin Detent Spring (x2)
14	Latch Pin (x2)
15	Ejector
16	Magazine Tube
17	Magazine Follower
18	Magazine Spring
19	Magazine Limiter
20	Magazine Spring Retainer
21	Magazine Cap
22	Magazine Cap Sling Stud

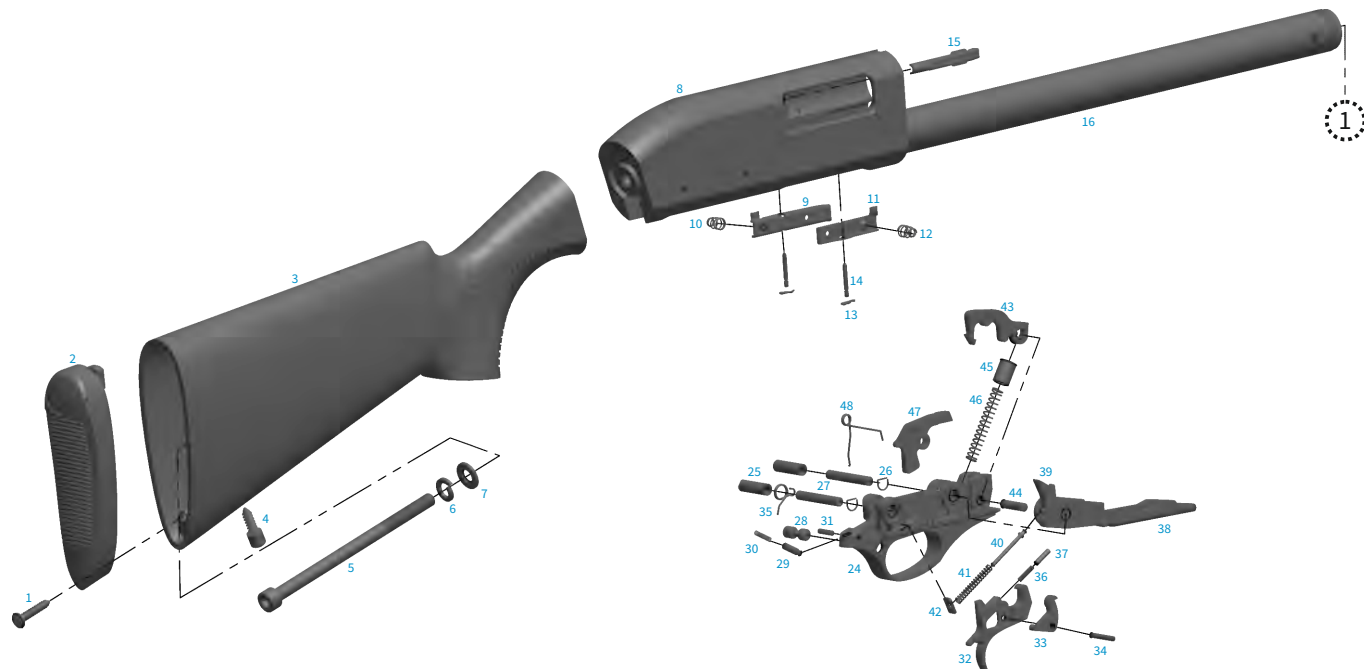
### NO PART NAME

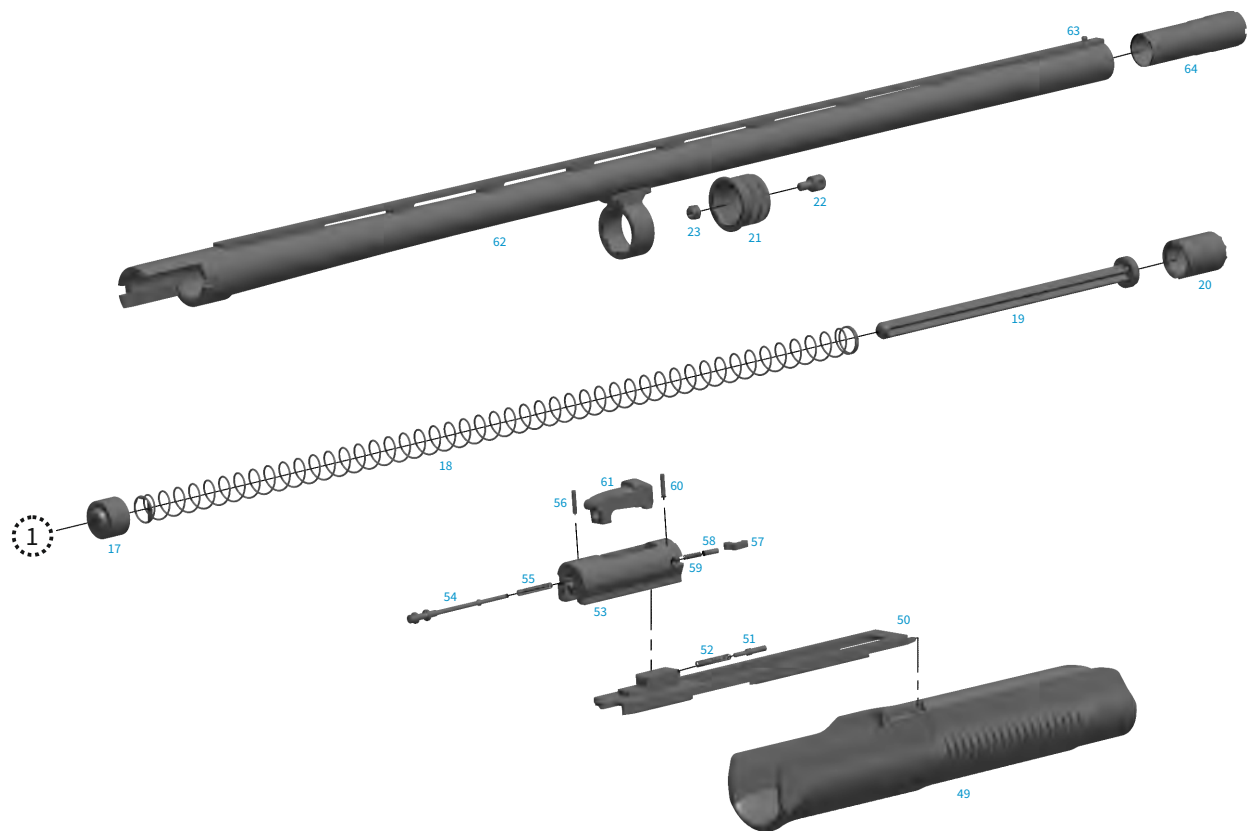
23	Hexagon Fiber Nut M5
24	Trigger Plate
25	Trigger Plate Pin Bushing (x2)
26	Trigger Plate Pin Detent Spring (x2)
27	Trigger Plate Pin (x2)
28	Safety Button
29	Safety Button Detent Pin
30	Safety Button Spring
31	Safety Spring Retaining Pin Ø3X11.8
32	Trigger
33	Trigger Sear
34	Trigger Pin Ø3X19.8
35	Trigger Spring
36	Trigger Sear Detent Spring
37	Trigger Sear Detent Pin Ø3X11.8
38	Carrier
39	Carrier Dog
40	Carrier Dog Follower
41	Carrier Dog Follower Spring
42	Carrier Dog Follower Plate
43	Hammer

### NO PART NAME

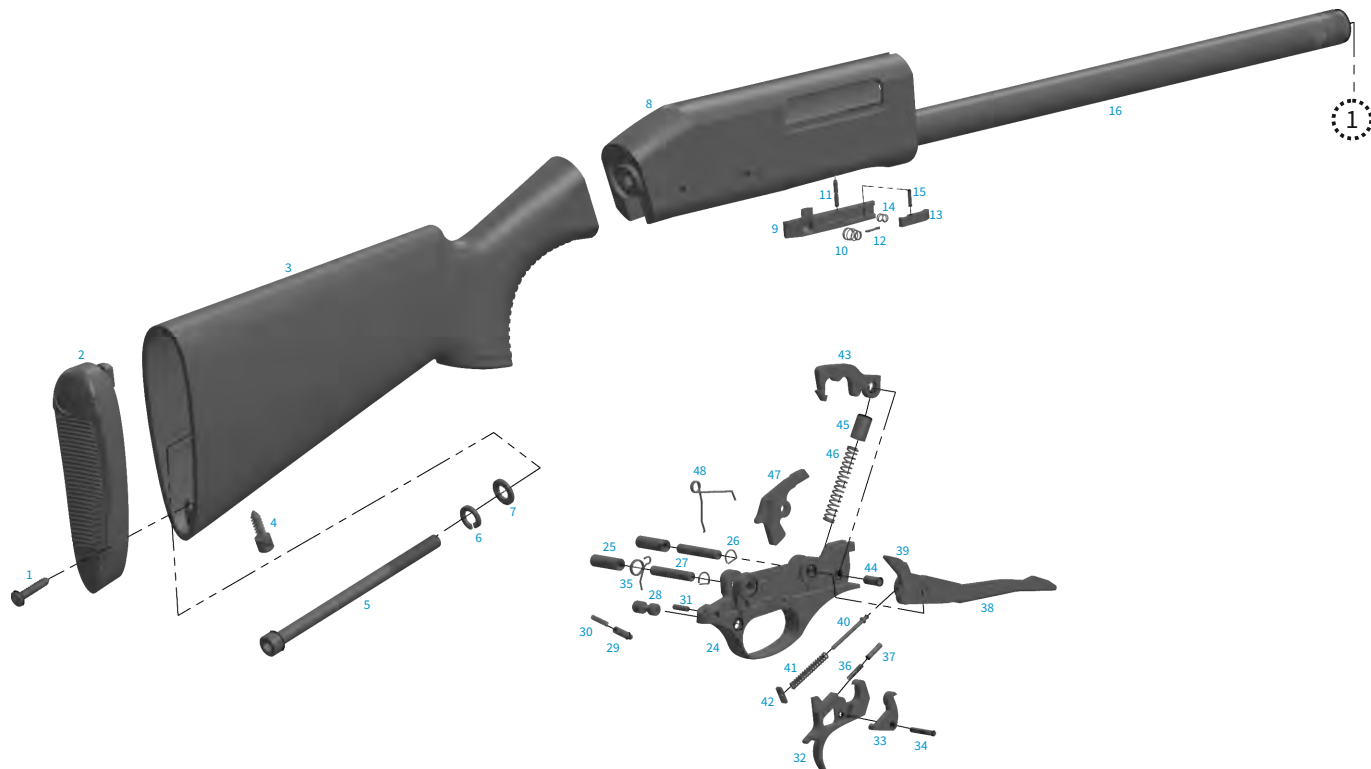
44	Hammer Pin Ø5X18.8
45	Hammer Plunger
46	Hammer Spring
47	Action Release
48	Release Latch Spring
49	Forend
50	Action Bar
51	Action Bar Plunger
52	Action Bar Plunger Spring
53	Breech Bolt
54	Firing Pin
55	Firing Pin Spring
56	Firing Pin Retaining Pin Ø2.5X13.8
57	Extractor
58	Extractor Plunger Pin Ø3X9.8
59	Extractor Spring
60	Extractor Pin Ø2.5X13.8
61	Locking Block
62	Barrel
63	Front Sight
64	Mobile Choke

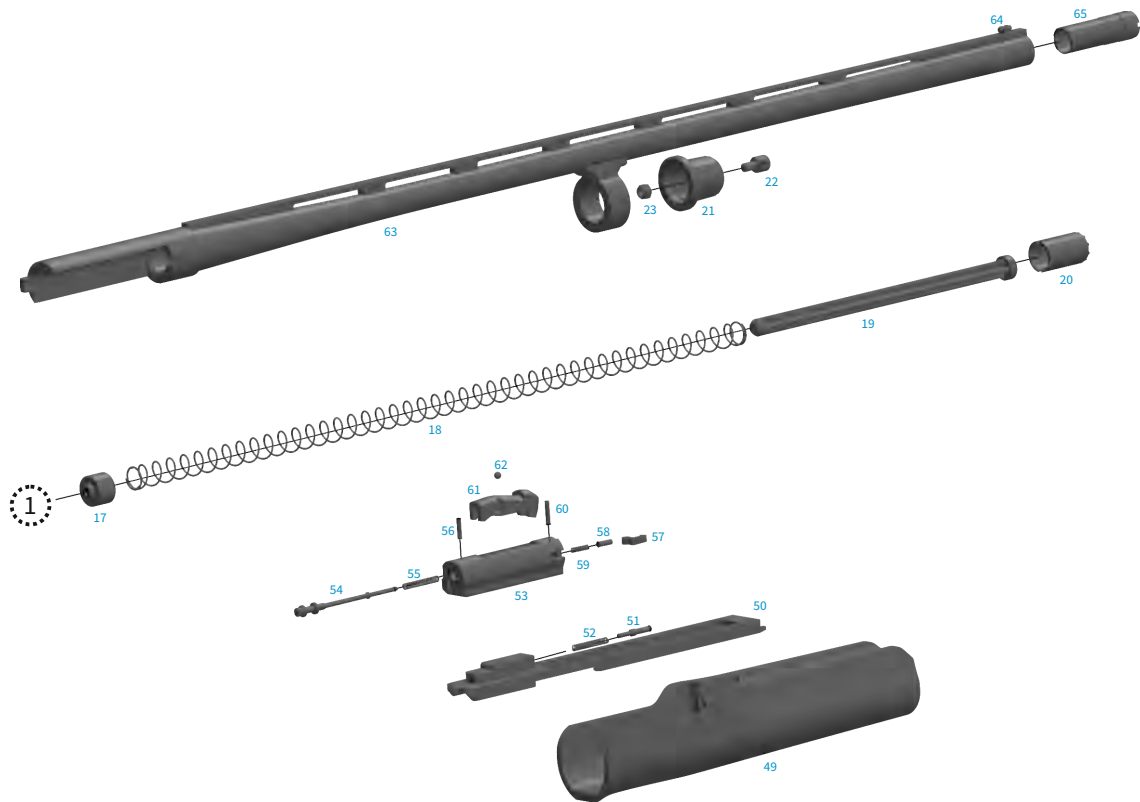
## 12GA - 20GA PART DIAGRAM





## 28GA PART DIAGRAM





## 28GA PART LIST

### NO PART NAME

1	Recoil Pad Screw
2	Recoil Pad
3	Stock
4	Stock Sling Stud
5	Stock Screw
6	Washer Stopper
7	Stock Screw Washer
8	Receiver
9	Latch
10	Latch Spring
11	Latch Pin
12	Latch Pin Detent Spring
13	Latch Tip
14	Latch Tip Spring
15	Latch Tip Pin Ø2X9.8
16	Magazine Tube
17	Magazine Follower
18	Magazine Spring
19	Magazine Limiter
20	Magazine Spring Retainer
21	Magazine Cap
22	Magazine Cap Sling Stud
23	Hexagon Fiber Nut M5

### NO PART NAME

24	Trigger Plate
25	Trigger Plate Pin Bushing (x2)
26	Trigger Plate Pin Detent Spring (x2)
27	Trigger Plate Pin (x2)
28	Safety Button
29	Safety Button Detent Pin
30	Safety Button Spring
31	Safety Spring Retaining Pin Ø3X11.8
32	Trigger
33	Trigger Sear
34	Trigger Pin Ø3X19.8
35	Trigger Spring
36	Trigger Sear Detent Spring
37	Trigger Sear Detent Pin Ø3X11.8
38	Carrier
39	Carrier Dog
40	Carrier Dog Follower
41	Carrier Dog Follower Spring
42	Carrier Dog Follower Plate
43	Hammer
44	Hammer Pin Ø5X12
45	Hammer Plunger
46	Hammer Spring

### NO PART NAME

47	Action Release
48	Release Latch Spring
49	Forend
50	Action Bar
51	Action Bar Plunger
52	Action Bar Plunger Spring
53	Breech Bolt
54	Firing Pin
55	Firing Pin Spring
56	Firing Pin Retaining Pin Ø2.5X11.8
57	Extractor
58	Extractor Plunger Pin Ø3X9.8
59	Extractor Spring
60	Extractor Pin Ø2.5X13.8
61	Locking Block
62	Steel Ball Ø4
63	Barrel
64	Front Sight
65	Mobile Choke



## 410 CAL PART LIST

### NO PART NAME

1	Recoil Pad Screw
2	Recoil Pad
3	Stock
4	Stock Sling Stud
5	Stock Screw
6	Washer Stopper
7	Stock Screw Washer
8	Receiver
9	Latch
10	Latch Spring
11	Latch Pin
12	Latch Pin Detent Spring
13	Latch Tip
14	Latch Tip Spring
15	Latch Tip Pin Ø2X9.8
16	Magazine Tube
17	Magazine Follower
18	Magazine Spring
19	Magazine Limiter
20	Magazine Spring Retainer
21	Magazine Cap
22	Magazine Cap Sling Stud
23	Hexagon Fiber Nut M5

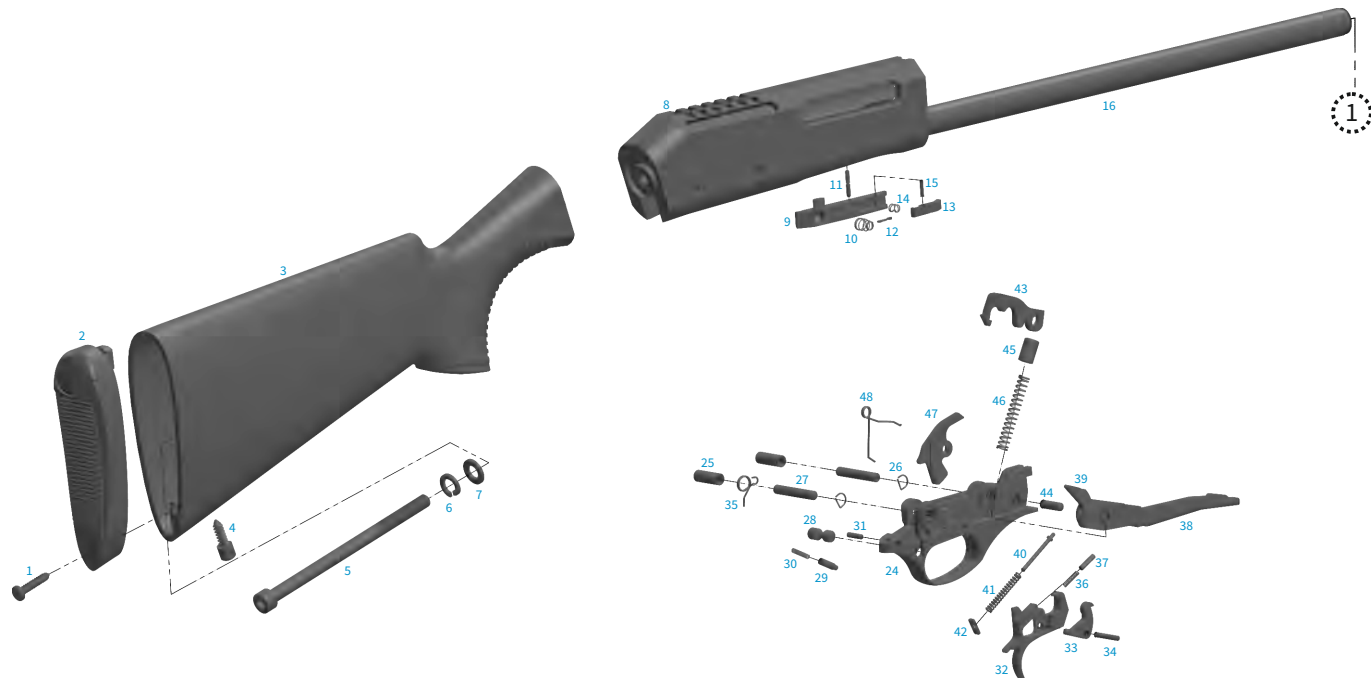
### NO PART NAME

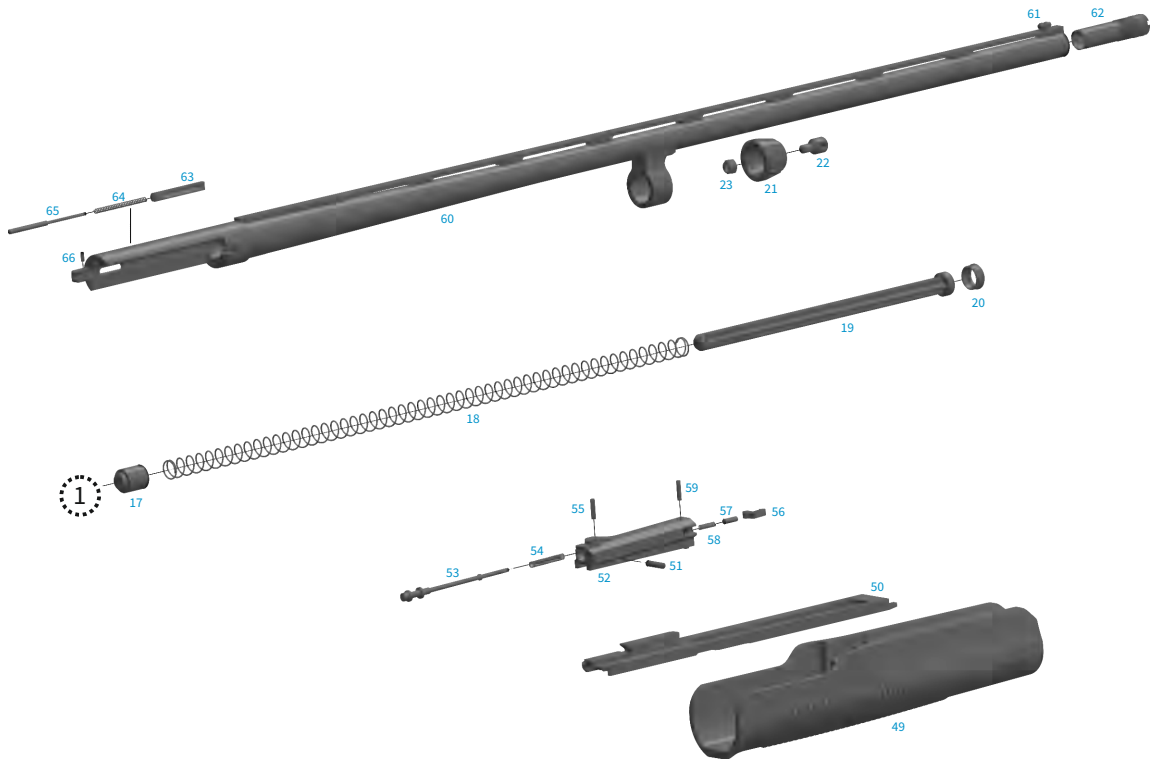
24	Trigger Plate
25	Trigger Plate Pin Bushing (x2)
26	Trigger Plate Pin Detent Spring (x2)
27	Trigger Plate Pin (x2)
28	Safety Button
29	Safety Button Detent Pin
30	Safety Button Spring
31	Safety Spring Retaining Pin Ø3X11.8
32	Trigger
33	Trigger Sear
34	Trigger Pin Ø3X19.8
35	Trigger Spring
36	Trigger Sear Detent Spring
37	Trigger Sear Detent Pin Ø3X11.8
38	Carrier
39	Carrier Dog
40	Carrier Dog Follower
41	Carrier Dog Follower Spring
42	Carrier Dog Follower Plate
43	Hammer
44	Hammer Pin Ø5X16
45	Hammer Plunger
46	Hammer Spring

### NO PART NAME

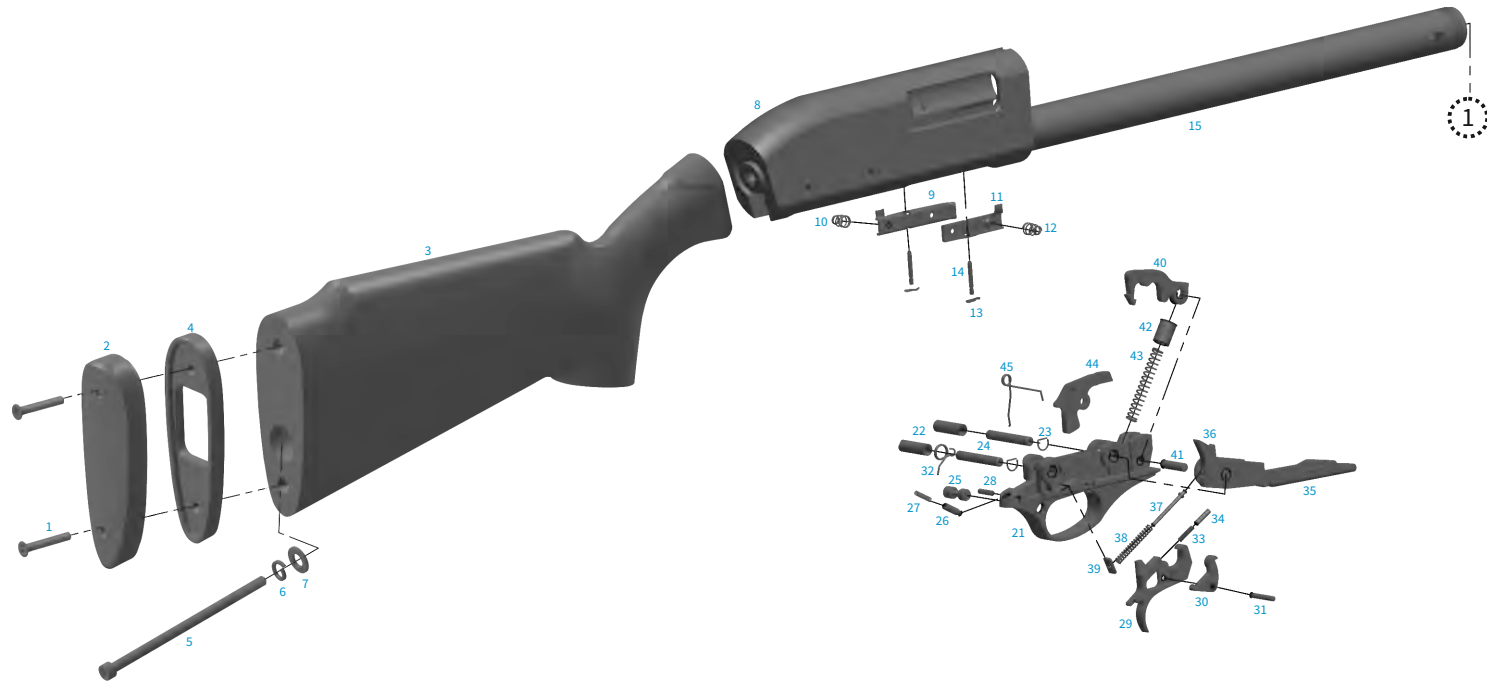
47	Action Release
48	Release Latch Spring
49	Forend
50	Action Bar
51	Locking Block Pin Ø3.5X13.8
52	Breech Bolt
53	Firing Pin
54	Firing Pin Spring
55	Spiral Pin Ø2.5X12
56	Extractor
57	Extractor Plunger Pin Ø3X9.8
58	Extractor Spring
59	Extractor Pin Ø2.5X11.8
60	Barrel
61	Front Sight
62	Mobile Choke
63	Ejector
64	Ejector Spring
65	Ejector Spring Guide
66	Ejector Block Pin Ø2X5.8 Split

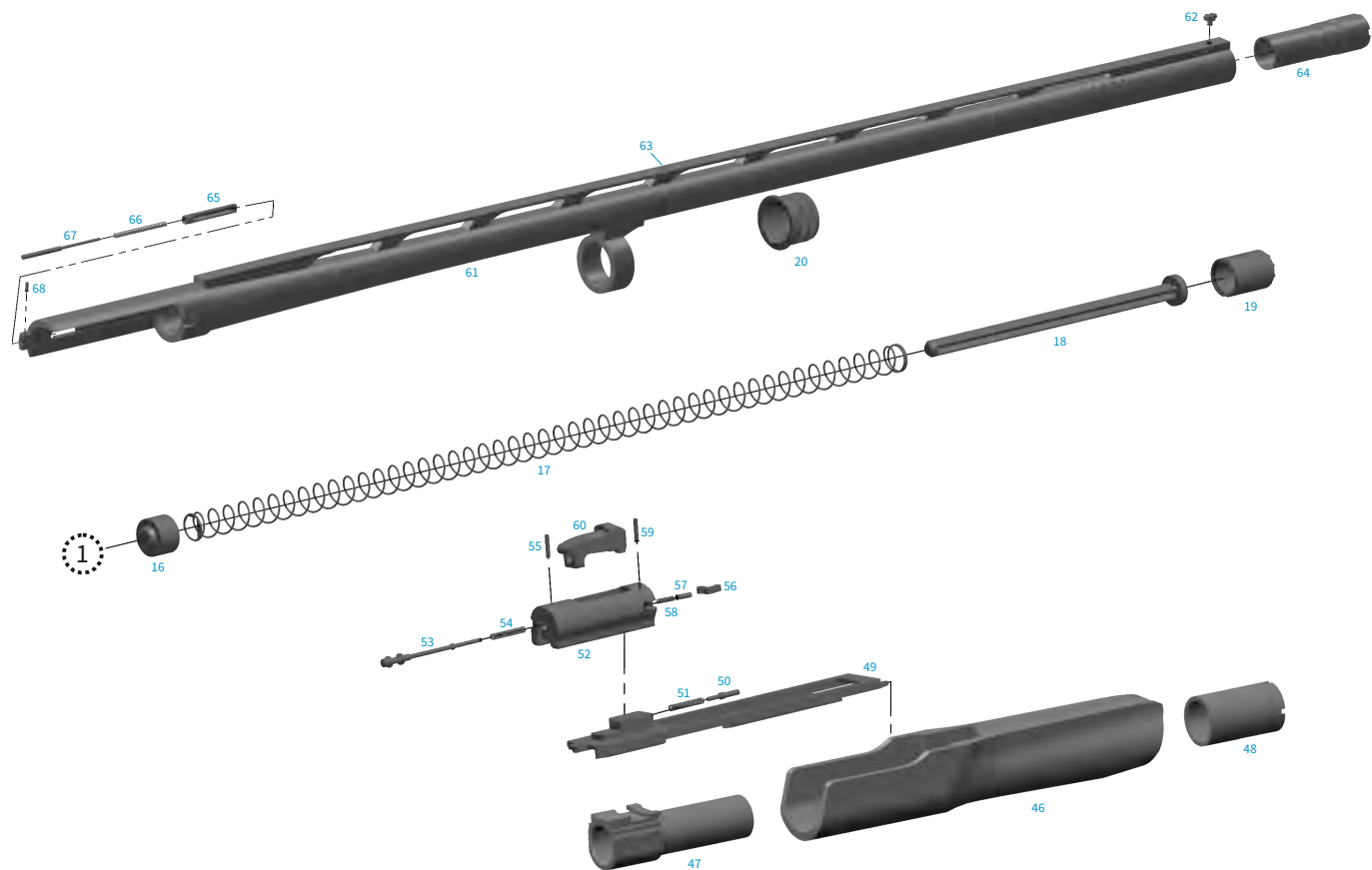
## 410 CAL PART DIAGRAM





# 612T PART DIAGRAM





## 612T PART LIST

### NO PART NAME

1	Recoil Pad Screw
2	Recoil Pad
3	Stock
4	Recoil Pad
5	Stock Screw
6	Washer Stopper
7	Stock Screw Washer
8	Receiver
9	Latch
10	Latch Spring
11	Interceptor Latch
12	Interceptor Latch Spring
13	Latch Pin Detent Spring (x2)
14	Latch Pin (x2)
15	Magazine Tube
16	Magazine Follower
17	Magazine Spring
18	Magazine Limiter
19	Magazine Spring Retainer
20	Magazine Cap
21	Trigger Plate
22	Trigger Plate Pin Bushing (x2)
23	Trigger Plate Pin Detent Spring (x2)

### NO PART NAME

24	Trigger Plate Pin (x2)
25	Safety Button
26	Safety Button Detent Pin
27	Safety Button Spring
28	Safety Spring Retaining Pin Ø3X11.8
29	Trigger
30	Trigger Sear
31	Trigger Pin Ø3X19.8
32	Trigger Spring
33	Trigger Sear Detent Spring
34	Trigger Sear Detent Pin Ø3X11.8
35	Carrier
36	Carrier Dog
37	Carrier Dog Follower
38	Carrier Dog Follower Spring
39	Carrier Dog Follower Plate
40	Hammer
41	Hammer Pin Ø5X18.8
42	Hammer Plunger
43	Hammer Spring
44	Action Release
45	Release Latch Spring
46	Forend

### NO PART NAME

47	Action Bar Sleeve
48	Action Bar Sleeve Nut
49	Action Bar
50	Action Bar Plunger
51	Action Bar Plunger Spring
52	Breech Bolt
53	Firing Pin
54	Firing Pin Spring
55	Firing Pin Retaining Pin Ø2.5X13.8
56	Extractor
57	Extractor Plunger Pin Ø3X9.8
58	Extractor Spring
59	Extractor Pin Ø2.5X13.8
60	Locking Block
61	Barrel
62	Front Sight
63	Center Bead Sight
64	Mobile Choke
65	Ejector
66	Ejector Spring
67	Ejector Spring Guide
68	Ejector Block Pin Ø2X5.8 Split





## **AKKAR USA, LLC.**

PO Box 7307  
North Kansas City, Missouri 64116  
[service@akkarusa.com](mailto:service@akkarusa.com) [www.akkarusa.com](http://www.akkarusa.com)