



**High Noon**  
**High Noon Elite**

**INSTRUCTIONS MANUAL**



**READ THE INSTRUCTIONS AND WARNINGS IN THIS MANUAL CAREFULLY BEFORE USING THIS FIREARM**

**FIREARMS SAFETY**

We believe that safe firearms handling is the most important consideration for anyone who uses firearms and ammunition. Please take a few minutes to thoroughly read and understand this instruction manual included with this shotgun.

**CAUTION**

**FIREARMS SAFETY DEPENDS ON YOU!**

- Don't rely on your gun's safety. Treat every gun as if were loaded and ready to fire.
- Never cross a fence, climb a tree or jump a ditch with a loaded gun.
- Never load or carry a loaded gun until you intend to use it.
- Watch your muzzle so the other fellow doesn't have to.
- Keep guns and ammunition separately and in locked storage.
- Don't shoot unless absolutely sure of your target and what is beyond it.
- Know the range of your gun.
- Always wear eye and ear protection when shooting.
- Always be sure the barrel is free of obstructions, and only carry ammunition specifically intended for the gun you are using.
- Do not alter or modify your gun. Have your gun regularly checked by a gunsmith.

**THIS MANUAL CONTAINS**

**SAFE GUN HANDLING IS YOUR PERSONAL RESPONSIBILITY AT ALL TIMES. Disregarding warnings in this manual may result in injury or death to you and others and damage to property.**

1. Important warnings that should be read and understood before using this firearm.
2. Directions and procedures for handling, loading, firing and unloading.
3. Instructions for care, cleaning, repair, and service of this shotgun.

This instruction and safety manual is designed to help you in learning how to properly use and care for your shotgun. Only when you are certain you have fully familiarized yourself with the function of your firearm should you practice loading, unloading and firing with live rounds of ammunition.

**This instruction manual should always accompany this firearm and be transferred with it upon change of ownership. Should you ever need to replace it, this manual is available FREE upon request.**

**DISCLAIMER OF LIABILITY**

We shall not be responsible for product malfunctioning or for physical injury, death or damage to property resulting from either intentional or accidental discharge of this firearm, its criminal or negligent use, improper or careless handling, unauthorized modifications or alteration, use of defective or improper or hand-loaded or (replaced) ammunition, or from its use for purposes or subjection to treatment for which it was not designed. For your safety, use only original high quality commercially manufactured ammunition in good condition that is appropriate to the caliber / gauge of your gun. We shall not be responsible for products or results from use of defective, improper or reloaded ammunition.

**WARNING - LEAD EXPOSURE**

Discharging firearms in poorly ventilated areas, cleaning firearms, or handling ammunition may result in exposure to lead and other substances that may cause birth defects, reproductive harms, and other serious physical injuries. Have adequate ventilation at all times. Wash your hands thoroughly after exposure. Shooting or cleaning guns may expose you to lead.

**WARNING**

Prior to removing this gun from its packaging and prior to loading and firing, carefully and thoroughly read the entire instruction manual which gives advice on the gun's proper handling and functioning. Your safety and that of others (including your family) depends on your responsible compliance with that advice. If unfamiliar with firearms, seek supervised instruction.

**FIREARMS SAFETY IS YOUR RESPONSIBILITY.**

## GENERAL SAFETY WARNINGS

1. Careless and improper handling of this gun could result in unintended discharge causing injury, death or property damage. Safety must be the first and constant consideration when handling a firearm and ammunition.
2. This shotgun was designed to function properly in its original condition. Alterations can make it unsafe. Do not alter any part or add or replace parts.
3. Shotguns should only be carried with the action open and chamber empty to prevent accidental discharge.
4. Always handle and treat your gun as if it were loaded so you never fire it accidentally when you think it is unloaded. Never take anyone's word it is unloaded. Always check it yourself with your fingers off the trigger and the gun pointed in a safe direction.
5. Never place your finger inside the trigger guard unless you intend to fire.
6. Water, snow, mud, excessive lubricating oil or grease or any other material can obstruct the barrel of your gun. Always check the barrels of your firearm for obstruction before loading and firing. Clean a fouled gun immediately to ensure its correct and safe function.
7. Keep the gun's muzzle pointed in a safe direction at all times. Never let the muzzle of a firearm point at any part of your body, another person or at anything you do not intend to shoot. Always be certain of your target before firing.
8. UNLOAD ALL FIREARMS WHEN NOT IN USE. NEVER STORE A LOADED FIREARM. Firearms and ammunition should be safely stored separately so that they are inaccessible to children or unauthorized users.
9. Always make sure your gun is not loaded before cleaning, storing, or handing it to another person.

10. Always wear safety glasses while shooting to protect your eyes from injury by gun powder, gas, lubricant, dirt or metallic particles, carbon residue, sparks or other debris.

11. Always wear ear protection when shooting, especially on a range. Without ear protection the noise from your gun and other guns close to you, could leave a "ringing" in the ears for some time after firing. Repeated exposure to shooting noise could result in permanent hearing loss.

12. Never climb a tree, fence or wall while carrying a loaded firearm.

13. Don't shoot at a hard surface or water. A ricochet may travel in unpredictable directions to strike you or an object you cannot see.

14. Firearms and alcohol do not mix. Never drink alcoholic beverages or take drugs before or during shooting, as this constitutes criminal disregard for your safety and that of others. Never use a gun while you are taking medication unless you have checked with your doctor to ensure your fitness to handle your gun safely.

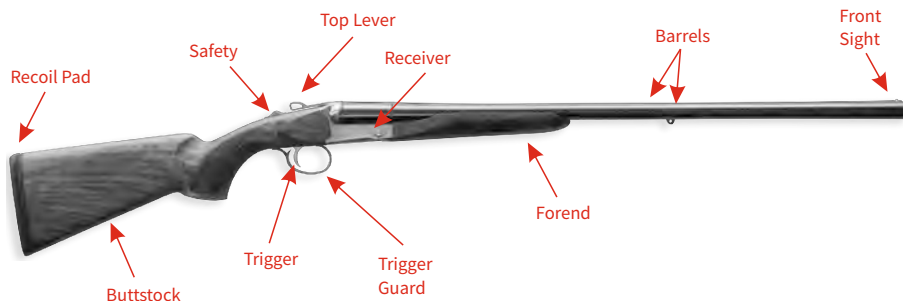
15. If you have any doubts about your ability to handle or use this shotgun safely, seek supervised instruction.

16. Horseplay has no place around firearms. Guns can't think - you can!

17. Remember, safety is your responsibility. Be a safe shooter.

18. FOLLOW THE LAW: Obey all local, state and federal laws regarding storage, shooting and transporting your firearm.

## NOMENCLATURE



## DIRECTIONS FOR ASSEMBLY

**WARNING: READ AND UNDERSTAND ALL INSTRUCTIONS AND WARNINGS IN THIS MANUAL BEFORE USING THIS SHOTGUN. IT IS IMPORTANT TO LEARN THE PARTS OF YOUR SHOTGUN AND THEIR FUNCTIONS BEFORE USING THIS FIREARM.**

Before assembling the shotgun, make sure there are no shot shells in the chambers.

1. Remove the forend from the barrel by pulling the forend release lever (Fig.1) away from the forend and pivot the forend away from the barrel (Fig.2).



Fig.1



Fig.2

2. Apply a small amount of high quality lubricant to all surfaces on both sides marked with red arrow in (Fig.3).

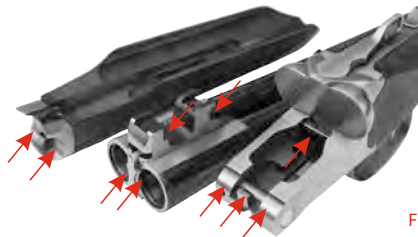


Fig.3

3. Attach barrels to the action and engaging the dual hinge pin surfaces at the forward portion of the receiver, with the hinge pin bearing notches on each side of the barrel. Hold the barrels with the muzzle at a downward angle with respect to the receiver. Once the bearings are properly seated, lift up on the barrels and close the action (Fig.4).



Fig.4

4. When the barrels are closed properly against the receiver, the Top Lever will position at the center of the action (Fig.5).



Fig.5

5. Attach the forend to the barrels by placing the metal part of the forend assembly against the receiver. Pivot forend toward the barrel to the closed and locked position against the barrels (Fig.6).



Fig.6

## OPERATING INSTRUCTIONS

**WARNING: READ AND UNDERSTAND ALL INSTRUCTIONS AND WARNINGS IN THIS MANUAL BEFORE USING THIS SHOTGUN. IT IS IMPORTANT TO LEARN THE PARTS OF YOUR SHOTGUN AND THEIR FUNCTIONS BEFORE USING THIS FIREARM.**

### TOP LEVER

The Top Lever controls the locking of the breech of the barrels to the receiver. To open the gun, move the Top Lever to its extreme right hand position and ease down the barrels. The Top Lever will then automatically return toward the center position while barrels are open (Fig.5).

### SAFETY / BARREL SELECTOR

Safety is first and foremost when handling any firearm. To engage the safety, slide the Safety Button fully rearward. There is a visible "S" to help guide you. To disengage the safety in order to fire the shotgun, slide the Safety Button fully forward. Always keep the safety in the "Safe" position until you are ready to fire the shotgun.

Your shotgun is equipped with only a manual safety which requires the Safety Button to be manually moved rearward to the “Safe” position to engage the safety from the fire position.

**WARNING: YOUR SHOTGUN IS EQUIPPED WITH A MANUAL SAFETY ONLY!**

**BARREL SELECTOR**

On your shotgun, the barrel selector is placed on the safety. You can select which barrel will fire first by sliding the Selector to either the right or left. With the Selector Button moved to right, the right barrel will fire first (Fig.7a). When the Selector Button is moved to the left position, the left barrel will fire first (Fig.7b).



Fig.7a



Fig.7b

**EXTRACTOR**

Your shotgun is equipped with manual extractor. When you open the breech of the shotgun, it will partially extract the shells for easy removal by hand (Fig.8).



Fig.8

**MULTI CHOKE TUBES**

Your shotgun is equipped with interchangeable multi choke tubes. The markings and the notches on the tube can identify the choke tube (Fig.9).



Fig.9

**Multi-Choke Tube Markings and Constrictions**

Name	Marking	Notches	Constriction (inches)			
			12ga	20ga	28ga	.410
Cylinder	C		.000"	.000"	.000"	.000"
Skeet	SK		.005"	.005"	.005"	.005"
Improved Cylinder	IC		.010"	.009"	.009"	.008"
Light Modified	LM		.015"	.012"	.012"	.010"
Modified	M		.020"	.015"	.015"	.012"
Improved Modified	IM		.025"	.018"	.018"	.014"
Full	F	I	.035"	.024"	.024"	.018"
Extra Full	XF		.040"	.027"	.027"	.020"
Turkey Choke	XXF		.045"	.032"	.032"	.025"

**WARNING: PERIODICALLY CHECK TO BE SURE THE CHOKE TUBES ARE TIGHT & PROPERLY SEATED.**

Before changing a choke tube, always make sure that your shotgun is unloaded and the safety is in the “Safe” position. To change the choke tubes, use the choke tube wrench. The wrench and additional chokes are supplied in the shotgun box. Insert the wrench into the recessed space of the tube and unscrew counterclockwise. Insert the desired choke tube and seat with the wrench in the clockwise direction (Fig.10).



Fig.10

**WARNING: NEVER FIRE YOUR SHOTGUN WITHOUT A CHOKE TUBE INSTALLED. This could damage the choke tube threads on the inside of the barrels.**

## AMMUNITION

Use only high quality factory ammunition specifically designed for your gauge of shotgun. The gauge and chamber are marked on barrel. The shells that can be used for each gauge are listed at below table. We do not recommend using slugs with choke tubes tighter than improved cylinder.

### WARNING: STEEL SHOT USAGE

Your shotgun will accommodate steel shot. However steel shot (up to and including shot size #2) should not be fired through your shotgun with a choke tighter than modified. If shot larger than #2 is used, the tightest choke used should be an improved cylinder. Do not use steel shot with improved modified, full or extra full choke tubes (flush mount or external).

**WARNING: ACCIDENTAL LOADING AND DISCHARGE OF SHELLS OF THE WRONG GAUGE IN YOUR GUN CAN RESULT IN DAMAGE TO YOUR GUN AND INJURY TO THE SHOOTER OR OTHERS.**

Only carry the proper ammunition with you when shooting.

## LOADING

**WARNING: READ AND UNDERSTAND ALL INSTRUCTIONS AND WARNINGS IN THIS MANUAL BEFORE USING THIS SHOTGUN.**

It is important to learn the parts of your shotgun and their functions before using this firearm. Be sure of your target and what's beyond before firing.

To load your shotgun, be sure the safety is in the "Safe" position, open the action by moving the top lever to the right. This will cause the lock to disengage and allow the barrels to pivot downward exposing the chambers. Insert shotshells of the appropriate gauge and size into the chambers (Fig.11). When you are finished loading the chambers, close the breech by pivoting the barrels against the action.



Fig.11

## FIRING

After you have inserted the shotshells into the chambers and have closed and locked the breech, your shotgun is ready to fire. Disengage the safety by pushing the safety button fully forward. Pull the trigger and the barrel will fire in the order of right-left. After firing, allow the trigger to return to the fully forward position before firing again. Always keep the shotgun pointed in a safe direction and the safety in the "safe" position.

**WARNING: READ AND COMPLETELY UNDERSTAND ALL INSTRUCTIONS AND WARNINGS IN THIS MANUAL BEFORE USING THIS SHOTGUN.**

## UNLOADING

Before unloading, check to assure that the safety is in the "Safe" position. Open the action by pushing the top lever all the way to the right and pulling the barrels fully downward.

Your shotgun is equipped with manual extractors. When you open the breech of the shotgun, they will partially extract the shells for easy removal by hand.

Gauge & Chamber	Shells can be used
12/70 12Ga 2 3/4"	12/70 12Ga 2 3/4"
12/76 12Ga 3"	12/70 12Ga 2 3/4" 12/76 12Ga 3"
12/89 12Ga 3 1/2"	12/70 12Ga 2 3/4" 12/76 12Ga 3" 12/89 12Ga 3 1/2"
20/76 20Ga 3"	20/70 20Ga 2 3/4" 20/76 20Ga 3"
28/76 28Ga 3"	28/70 28Ga 2 3/4" 28/76 28Ga 3"
410/76 410cal 3"	410/70 410cal 2 3/4" 410/76 410cal 3"

Do not use a cartridge that is longer than the maximum cartridge length that is stamped on the barrel.

## DISASSEMBLY

**WARNING: READ AND FULLY UNDERSTAND ALL INSTRUCTIONS AND WARNINGS IN THIS MANUAL BEFORE USING THIS SHOTGUN.**

Disassemble, clean and oil your shotgun at regular intervals or when it has been exposed to sand, water or other adverse conditions.

To disassemble your shotgun:

1. Remove the forend by pulling the forend release lever away from the forend, and pivoting the forend away from the barrel.
2. Push the top lever to the right to disengage the action.
3. Remove the barrel assembly.

Further disassembly is not recommended and not necessary for regular maintenance (Fig.12).



Fig.12

## CAUTION

Always unload your gun and store it and ammunition separately in locked receptacles out of children's reach and sight, minimizing the risk that the gun and ammunition could be easily available for loading and firing.

**USE YOUR SHOTGUN CAREFULLY AND SAFELY.**

## SERVICE INSTRUCTIONS

If your shotgun does require service, contact our local service department by e-mail, letter, fax or telephone. If you should ever have to send your shotgun back for repair please follow these instructions:

- a) Make absolutely certain it is unloaded;
- b) Do not send ammunition with your shotgun;
- c) Remove any accessories;
- d) Please package the gun securely (be certain gun parts can not shift during shipment) in a suitable shipping container;
- e) Please include, with your firearm, a clear description of the problem and service you wish us to perform;
- f) Please give us a clear ship-to address, (no P.O. Box numbers) your daytime phone number and if possible a fax number and email address;
- g) Please place your correspondence inside the package;



## **AKKAR FIVE YEAR LIMITED WARRANTY**

AKKAR USA firearms are warranted to be free from defects in materials and/or workmanship for one (1) year on wooden parts and surface treatment and five (5) years on other parts. This warranty follows the serial number and its original purchase date by the consumer.

The warranty does not cover repairs related to ordinary wear and tear, alterations by unauthorized persons, corrosion, accidents, misuse, use of incorrect or other than factory ammunition loaded to SAAMI specifications, gun barrels damaged by an obstructed bore, guns damaged in shipment due to improper packing and handling, the normal wear of any parts including finishes of metal, wood, camouflage or chrome, damaged or shopworn display guns, or failure to provide proper maintenance.

Non-AKKAR USA parts are not covered by the warranty. AKKAR USA reserves the unconditional right to inspect any firearm before making any repairs or adjustments under this warranty. AKKAR USA shall not be liable for any incidental, consequential, or contingent damages. AKKAR USA offers no other warranties of any kind or condition, including, but is not limited to any implied warranty of merchantability or fitness for a specific purpose.

THIS LIMITED WARRANTY GIVES YOU SPECIFIC LEGAL RIGHTS, AND YOU MAY ALSO HAVE OTHER RIGHTS WHICH VARY FROM STATE TO STATE.

## **AKKAR USA PERFORMANCE UNDER THE WARRANTY STATEMENT NOTED ABOVE**

1. After notice of defects in material and/or workmanship is received by AKKAR USA, AKKAR USA shall send instructions for shipment of the firearm; and repairs will be made and the firearm returned within a reasonable time after the firearm is received.
2. The cost of shipping, insurance charges, etc. involved in returning the firearm to AKKAR USA should be prepaid by the owner.
3. If AKKAR USA, after receipt of the firearm, determines that any defects in material(s) and/or workmanship were the result of abuse and/or neglect, or otherwise not covered by the warranty set forth above, AKKAR USA shall notify the owner of that effect and give an estimate for repair. In such cases, repair, return shipping and insurance charges, etc. shall be paid by such an owner.
4. Cost of warranted parts and labor performed shall be provided without charge by AKKAR USA.
5. In the event AKKAR USA is unable to make warranted repairs to the firearm, within a reasonable time after its receipt, AKKAR USA will notify the owner giving him / her the option too. A). receive a replacement for the same model, if then available in inventory, or B). receive a refund, either of which, if feasible, will be made through the store of original purchase.

FOR CUSTOMER SERVICE PLEASE CONTACT AKKAR USA AT

[service@akkarusa.com](mailto:service@akkarusa.com)

Akkar USA  
PO Box 7307  
North Kansas City, Missouri 64116

## STATE LAW WARNINGS

### CALIFORNIA

WARNING "Firearms must be handled responsibly and securely stored to prevent access by children and other unauthorized users. California has strict laws pertaining to firearms, and you may be fined or imprisoned if you fail to comply with them. Visit the Web site of the California Attorney General at <https://oag.ca.gov/firearms> for information on firearm laws applicable to you and how you can comply. Prevent child access by always keeping guns locked away and unloaded when not in use. If you keep a loaded firearm where a child obtains and improperly uses it, you may be fined or sent to prison."

### CONNECTICUT

Unlawful storage of a loaded firearm may result in imprisonment or fine.

### FLORIDA

It is unlawful, and punishable by imprisonment and fine, for any adult to store or leave a firearm in any place within the reach or easy access of a minor under 18 years of age or to knowingly sell or otherwise transfer ownership or possession of a firearm to a minor or a person of unsound mind."

### GUAM

It is unlawful and punishable by imprisonment and a fine for any adult to store or leave a firearm without placing it in a secure locked cabinet or closet, or without a trigger lock in place.

### MAINE

Endangering the welfare of a child is a crime. If you leave a firearm and ammunition within easy access of a child, you may be subject to fine, imprisonment or both. Keep firearms and ammunition separate. Keep firearms and ammunition locked up. Use trigger locks .

### MARYLAND

WARNING: Children can operate firearms which may cause death or serious injury. It is a crime to store or leave a loaded firearm in any location where an individual knew or should have known that an unsupervised minor would gain access to the firearm. Store your firearm responsibly!

### MASSACHUSETTS

WARNING FROM THE MASSACHUSETTS ATTORNEY GENERAL: This handgun is not equipped with a device that fully blocks use by unauthorized users. More than 200,000 firearms like this one are stolen from their owners every year in the United States. In addition, there are more than a thousand suicides each year by younger children and teenagers who get access to firearms. Hundreds more die from accidental discharge. It is likely that many more children sustain serious wounds or inflict such wounds accidentally on others. To limit the chance of such misuse, it is imperative that you keep this weapon locked in a secure place and take other steps necessary to limit the possibility of theft or accident. Failure to take reasonable preventive steps may result in innocent lives being lost, and in some circumstances may result in your liability for these deaths."

It is unlawful to store or keep a firearm, rifle, shotgun or machine gun in any place unless that weapon is equipped with a tamper resistant safety device or is stored or kept in a securely locked container.

### MINNESOTA

It is unlawful to store or leave a loaded firearm where a child can obtain access.

### NEW HAMPSHIRE

It is important that the owner of a firearm seek firearm safety instructions from a certified firearms instructor and keep firearms secured from unauthorized use.

### NEW JERSEY

It is a criminal offense, punishable by a fine and imprisonment, for an adult to leave a loaded firearm within easy access of a minor.

### NEW YORK

The use of a locking device or safety lock is only one aspect of responsible firearm storage. For increased safety, firearms should be stored unloaded and locked in a location that is both separate from their ammunition and inaccessible to children and unauthorized persons.

### NORTH CAROLINA

It is unlawful to store or leave a firearm that can be discharged in a manner that a reasonable person should know is accessible to a minor.

### PUERTO RICO

The use of a locking device or safety lock on a firearm is advisable. Every loaded weapon as well as its ammunition must be kept out of the reach of minors or people who are not authorized to use them. It is advisable to keep your weapons apart from the ammunition.

### TEXAS

It is unlawful to store, transport, or abandon an unsecured firearm in a place where children are likely to be and can obtain access to the firearm.

### WISCONSIN

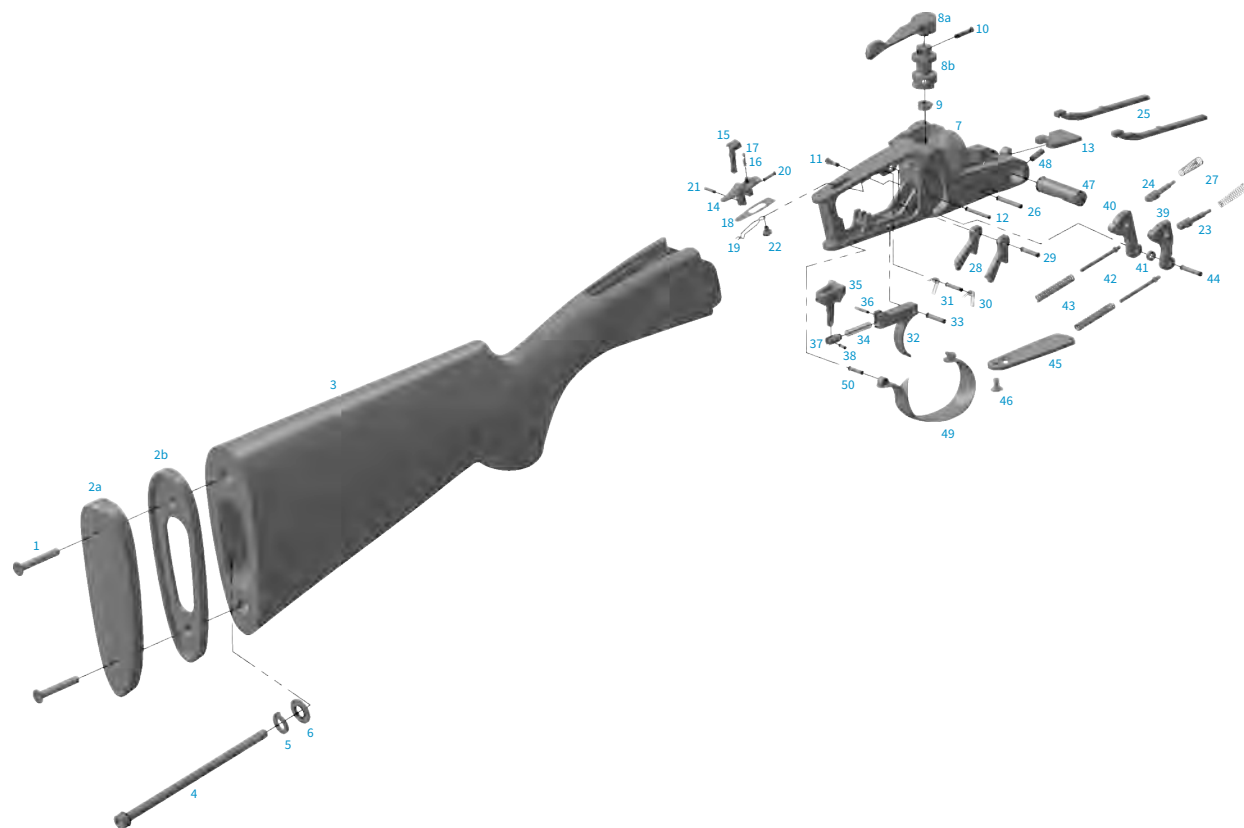
If you leave a loaded firearm within the reach or easy access of a child you may be fined or imprisoned or both if the child improperly discharges, possesses, or exhibits the firearm.

**NOTE**

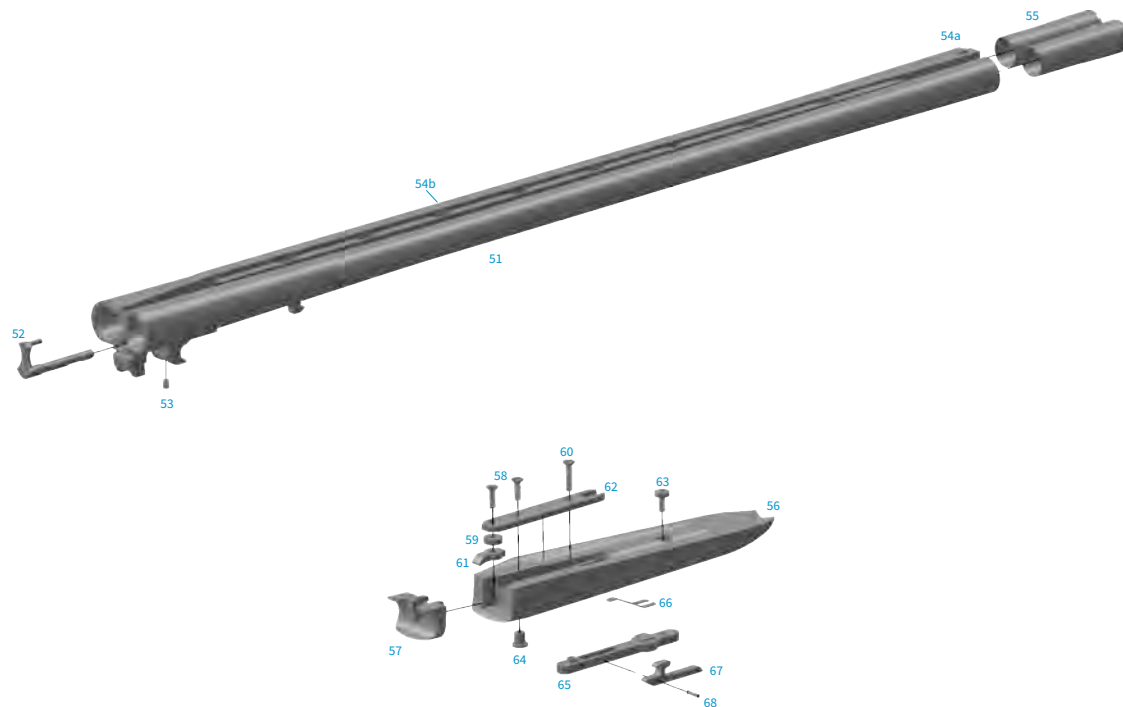
**NOTE**

**NOTE**

## 12GA - 20GA - 28GA - 410 CAL PART DIAGRAM



## 12GA - 20GA - 28GA - 410 CAL PART DIAGRAM



## 12GA - 20GA - 28GA - 410 CAL PART LIST

### STOCK GROUP

- 1 Recoil Pad Screw(x2)
- 2a Recoil Pad
- 2b Recoil Pad Base
- 3 Stock
- 4 Stock Bolt
- 5 Stock Bolt Lock Washer
- 6 Stock Bolt Washer

### RECEIVER GROUP

- 7 Receiver
- 8a Top Lever
- 8b Top Lever Bottom
- 9 Top Lever Spring
- 10 Spiral Pin Ø3X15.8
- 11 Top Lever Screw
- 12 Hammer Cocking Rod Pin Ø2.5X21.8
- 13 Locking Plate
- 14 Safety
- 15 Selector
- 16 Selector Spring
- 17 Selector Ball
- 18 Safety Bottom Film (For black receiver only)
- 19 Safety Spring
- 20 Selector Pin Ø2X9.8
- 21 Safety Pin Ø2X9.8 Split
- 22 Safety Spring Screw

- 23 Firing Pin Right
- 24 Firing Pin Left
- 25 Hammer Cocking Rod (x2)
- 26 Firing Pin Retainer Pin Ø2.5X21.8
- 27 Firing Pin Spring (x2)
- 28 Sear (x2)
- 29 Sear Pin Ø3X15.8
- 30 Sear Spring (x2)
- 31 Sear Spring Pin Ø2.5X11.8
- 32 Trigger
- 33 Trigger Pin Ø3X15.8
- 34 Trigger Spring
- 35 Trigger Sear Catch
- 36 Trigger Sear Catch Pin Ø2X11.8
- 37 Trigger Sear Catch Plunger
- 38 Trigger Sear Catch Plunger Pin Ø2X5
- 39 Hammer Right
- 40 Hammer Left
- 41 Hammer Spacer
- 42 Hammer Spring Guide Rod (x2)
- 43 Hammer Spring (x2)
- 44 Hammer Pin Ø3X17.8
- 45 Bottom Plate
- 46 Bottom Plate Screw
- 47 Receiver Main Pin
- 48 Receiver Main Pin Stop Screw
- 49 Trigger Guard
- 50 Trigger Guard Pin Ø2.5X11.8

### BARREL GROUP

- 51 Barrel
- 52 Extractor
- 53 Extractor Stop Screw
- 54a Front Sight
- 54b Center Bead Sight
- 55 Choke Tube (x2)

### FOREND GROUP

- 56 Forend
- 57 Iron Hook
- 58 Iron Hook Screw (X2) M4X13.75 CSH
- 59 Iron Hook Washer
- 60 Forend Screw Front M4X19.75 CSH
- 61 Lever Plate
- 62 Lever Plate Lug
- 63 Forend Plate Screw M4X14 CYH
- 64 Lever Plate Bushing
- 65 Forend Plate
- 66 Forend Catch Spring
- 67 Forend Catch
- 68 Forend Catch Pin Ø2X9.8





**AKKAR USA, LLC.**

PO Box 7307  
North Kansas City, Missouri 64116  
[service@akkarusa.com](mailto:service@akkarusa.com) [www.akkarusa.com](http://www.akkarusa.com)